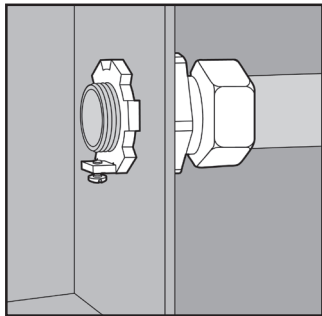


GROUNDING STRAIGHT LIQUIDTIGHT CONNECTORS



APPLICATION

- Designed for use with liquidtight conduit
- Provide a means of connecting to boxes in wet or dry locations
- A grounding lug and screw provide a secure connection for ground wiring
- Offered in three configurations: Straight, 45°, 90°
- Supplied complete with a Type 316 SS gland nut, polyethylene sealing ring, Type 316 SS ferrule, sealing gasket, and Type 316 SS grounding locknut
- Type 316 SS inside ferrule provides extra corrosion resistance on inside of fitting (Other inside ferrules made of materials such as carbon steel may corrode easily, effecting the entire fitting.)
- Manufactured in stainless steel to help prevent corrosion
- Can be installed using ordinary hand tools and require little maintenance or repair
- Provided in a bright, polished finish that does not require touch up or painting

PRODUCT DETAILS

Material:

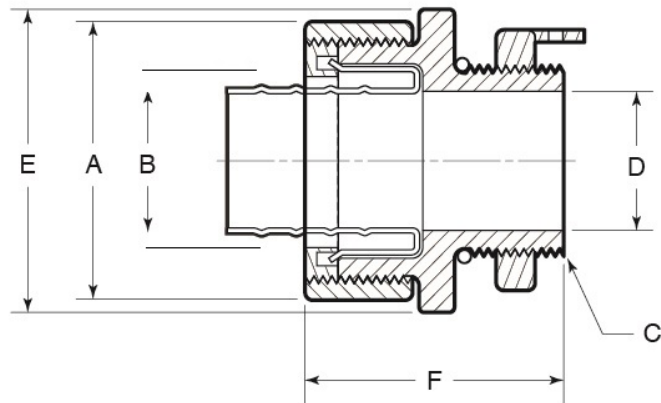
- Body: CF8M (316 SS)
- Locknut: CF8M (316 SS)
- Sealing Gasket: Neoprene
- Inside Ferrule: 316 SS
- Sealing Ring: Polypropylene
- Gland Nut: 316 SS

Standards:

ASTM A351, ASTM F593

Country of Origin:

Manufactured in USA



Part Number	Conduit Size	Weight/ 100 (lbs.)	Dimension (in.)					
			A	B	C	D	E	F
LT50-G	½ in.	27	1.58	0.86	½-14 NPT	0.62	1.54	1.50
LT75-G	¾ in.	38	1.60	1.06	¾-14 NPT	0.78	1.71	1.67
LT100-G	1 in.	55	1.90	1.33	1-11-½ NPT	1.00	1.99	1.84



© 2015 GIBSON STAINLESS & SPECIALTY, INC. - REV 12/2015

PO BOX 847, GREENSBURG, PA 15601
PHONE: 1-800-945-4316 • FAX: 724-838-1544

WEB: GIBSONSTAINLESS.COM